



Instrumentation Products

Flange Adaptors



Flange Adaptors

Product description

Piping and Instrumentation are linked by the AS-Schneider Flange Adaptors. The compact design eliminates the need for additional connections.

Features

Connection 1 (Flange connection)

- ASME B16.5 flange connection
Flange size 1/2" to 3"
Flange Class 150 to 2.500
- EN 1092-1 flange connection from
DN15 to DN80 and from PN10 to PN100

Connection 2

- Compression fitting DIN 2353
- Threaded
- Twin ferrule compression fitting

Materials

- ASME flanges A105 or 316/316L
- EN flanges 1.0460 or 1.4571

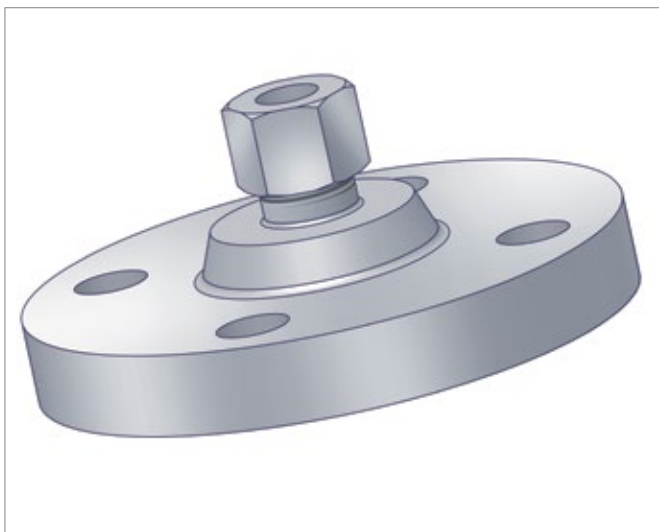
Optional Features

- NACE MR0175/ISO 15156 compliant materials
- Cleaned and degreased for oxygen service
- Certificates according EN 10204

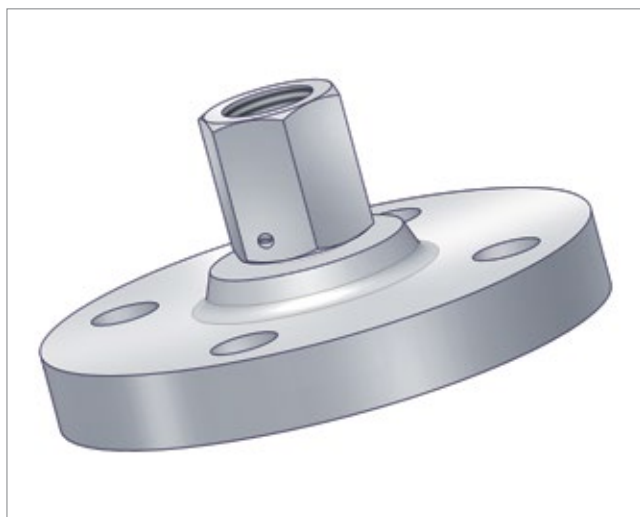
If you don't find your option please contact us.



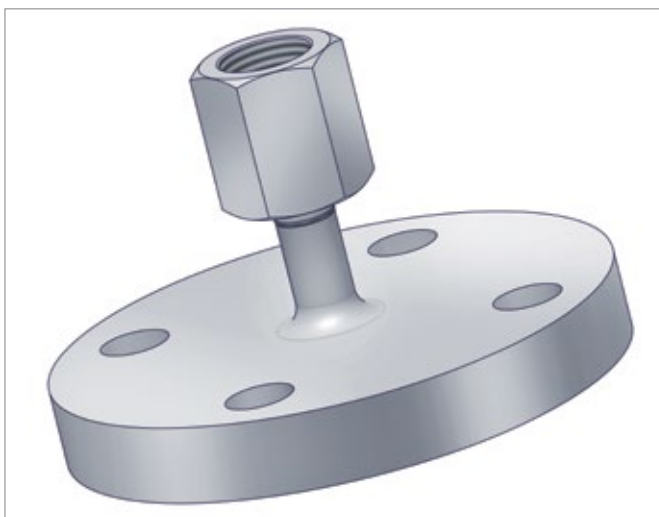
FAB-QLDLN4-P



FAN-QLDG14-P



FAN-QLDLGQ-P



FAN-QLDLGD-P

Flange Adaptors | Ordering Information

Ordering Information | Flange Adaptor

		1	2	3	4	5	6	7	8	9	10	11	12	13	14
		F	A	N	-	N	A	A	G	1	4	-	C		
Flange Adaptor															
Flange type															
N	Flange, ASME														
Q	Flange, EN														
Connection 1 (Flange connection)															
ASME Flange		EN Flange													
A	1/2" RF	DN15 B1													
D	3/4" RF	DN15 C (tongue)													
F	3/4" RTJ	DN20 B1													
G	1" RF														
L		DN25 B1													
N	2" RF	DN25 B2													
P		DN25 C (tongue)													
Q	2" RTJ	DN25 D (groove)													
U	3" RF														
W	3" RTJ	DN50 B1													
Z		DN80 B1													
ASME Flange		EN Flange													
A	Class 150														
B	Class 300	PN 16 (only applicable to ≥ DN50)													
C	Class 600														
D	Class 900	PN 40													
E	Class 1500	PN 63 (only applicable to ≥ DN50)													
F	Class 2500	PN 100													
G		PN 160													
Connection 2															
G14	Compression fitting DIN2353 12S														
G15	Compression fitting DIN2353 14S														
LGB	Swivel nut G 1/4 (welded)														
LGD	Swivel nut G 1/2 (welded)														
LGN	Swivel nut G 1/4														
LGQ	Swivel nut G 1/2														
LN4	Female thread 1/2NPT (positions 1-3 change to FAB)														
	Twin ferrule compression fitting on request														
Material															
ASME Flange		EN Flange													
C	A105	1.0460													
P		1.4571													
S	316L														
Optional Features															
B	Oxygen service														
N	NACE MR0175/ISO 15156														

Armaturenfabrik Franz Schneider GmbH + Co.KG reserves the right to change materials, specifications or designs without notice.





**Armaturenfabrik Franz Schneider
GmbH + Co. KG**

Bahnhofplatz 12 | 74226 Nordheim
Deutschland / Germany

Tel: +49 71 33 101-0

Fax: +49 71 33 101-148



www.as-schneider.com



AS-Schneider Asia-Pacific Pte. Ltd.

970 Toa Payoh North, #02-12/14/15
Singapore 318992

Tel: +65 62 51 39 00

Fax: +65 62 51 39 90



www.as-schneider.sg



Armaturenfabrik Franz Schneider SRL

Sales Office:
Str. Basarabilor, Nr. 7 | 100036 Ploiesti
Romania

Tel: +40 244 384 963

Fax: +40 244 384 963

Production Plant:
Str. Mihai Viteazu, Nr. 327i | 507085 Harman
Jud. Braşov | Romania

Tel: +40 368 41 40 25

Fax: +40 368 41 40 26



www.as-schneider.ro



AS-Schneider Middle East FZE

P.O. Box 18749 | Dubai
United Arab Emirates

Tel: +971 4 880 85 75

Fax: +971 4 880 85 76



www.as-schneider.ae



AS-Schneider America, Inc.

17471 Village Green Dr | Houston, TX 77040
United States of America

Tel: +1 281 7 60 10 25

Fax: +1 281 5 06 79 35



www.as-schneider.com